

CS13A-E321H-50	50 µg
CS13A-E321H-100	100 µg
CS13A-E321H-250	250 µg
CS13A-E321H-1000	1000 µg

LwCas13a, Active

Recombinant *L. wadei* protein expressed in *E. coli*

Catalog # CS13A-E321H

Lot # X3385-3

Product Description

Recombinant *Leptotrichia wadei* LwCas13a (1-1152) was expressed in *E. coli* with a C-terminal His tag. The protein accession number is [WP_021746774](#).

Alternative name (s)

CRISPR-associated endoribonuclease Cas13a, LwC2c2, LwaCas13a, EndoRNase, Uniprot accession [U2PWF1](#).

Formulation

Recombinant protein stored in 50mM sodium phosphate, pH 8.0, 300mM NaCl, 150mM imidazole, 1mM DTT, 10% glycerol.

Storage and Stability

Store product at -70°C . For optimal storage, aliquot target into smaller quantities after centrifugation and store at recommended temperature. For most favorable performance, avoid repeated handling and multiple freeze/thaw cycles.

Always include RNase inhibitor at manufacturer recommended concentrations in Cas enzyme reactions.

Scientific Background

Cas13a is RNA-guided RNA endonuclease that belongs to class 2 type VI CRISPR-Cas system (1). Cas13a possess both RNA recognition and cleavage activities and cleaves RNA through conserved basic residues within its two HEPN domains (2). Interestingly, activated Cas13a induces collateral cleavage of nearby non-targeted RNAs in a nonspecific manner. This property of Cas13a enzyme has been leveraged for the development of sensitive and robust nucleic acid detection diagnostic tool for clinical samples. CRISPR-Cas13a system provides opportunity for the development of clinical research in precision oncology (3).

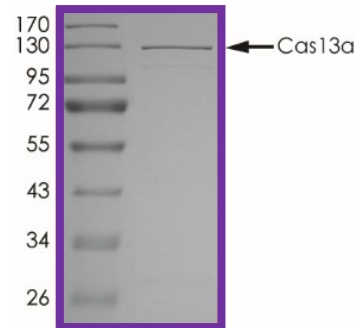
References

1. East-Seletsky A, et al. 2016. Two distinct RNase activities of CRISPR-C2c2 enable guide-RNA processing and RNA detection. *Nature*. 538:270–3.
2. Abudayyeh O, et al. 2016. C2c2 is a single-component programmable RNA-guided RNA-targeting CRISPR effector. *Science*. 353:5573.
3. Zhang J, You Y. 2020. CRISPR-Cas13a system: A novel approach to precision oncology. *Cancer Biol Med*. 17(1):6-8.

To place your order, please contact us by phone 1-(604)-232-4600, fax 1-604-232-4601 or by email: orders@signalchem.com or IVD@signalchem.com - www.signalchem.com

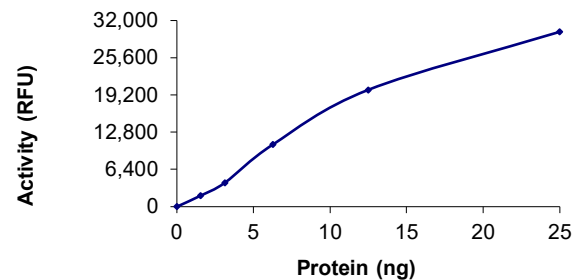
FOR IN VITRO RESEARCH PURPOSES ONLY. NOT INTENDED FOR USE IN HUMAN OR ANIMALS.

Purity



SDS-PAGE gel image
The purity of LwCas13a was determined to be ~90% by densitometry, Observed MW ~130 kDa, Calculated MW ~140 kDa

Activity



The activity of LwCas13a was evaluated as per the activity assay protocol.

LwCas13a, Active

Recombinant *L. wadei* protein expressed in *E. coli*

Catalog #	CS13A-E321H
Lot #	X3385-3
Purity	~90%
Concentration	0.2 µg/µl 7.14 pmol/µg
Stability	1yr at -70°C from date of shipment
Storage & Shipping	Store product at -70°C . For optimal storage, aliquot target into smaller quantities after centrifugation and store at recommended temperature. For most favorable performance, avoid repeated handling and multiple freeze/thaw cycles. Product shipped on dry ice.

Cas13 Activity Assay Protocol

Reaction Components

Active Cas13

Active Cas13 diluted with Cleavage Buffer and assayed as outlined in sample activity plot. (Note: these are suggested working dilutions and it is recommended that the researcher perform a serial dilution of active Cas13a for optimal results).

Cas13 Reaction Buffer (10x) (Catalog #: CS13-09)

Buffer components: 200 mM HEPES pH 7.0, 500 mM KCl, 50 mM MgCl₂, 1 mg/mL BSA.

CRISPR RNA

Single guide RNA containing a target-specific spacer sequence and a scaffold sequence responsible for recruiting the Cas enzyme.

Target RNA activator

An RNA oligo that contains the complementary sequence to the crRNA.

Reporter Substrate

A synthetic RNA oligonucleotide labeled with a fluorophore and a quencher on the two termini.

Assay Protocol

The RNA trans-cleavage activity of Cas13 is detected in a CRISPR-based fluorescent reporter assay. RNA-guided RNA binding to Cas13a activates the enzyme, induces target RNA cutting as well as collateral RNase activity. The latter leads to the degradation of the reporter Substrate that emits a light signal on cleavage.

- Step 1.** Thaw the active Cas13 on ice. Prepare 1X Reaction Buffer. Equilibrate the buffer, guide RNA and target RNA to ambient temperature.
- Step 2.** Prepare the following working solutions with 1X RNA Reaction Buffer:
- o 4X final concentration of Active Cas13
 - o 4X final concentration of guide RNA
 - o 2X final concentration of activator/reporter mix containing the RNA activator and reporter Substrate.
- Step 3.** In a half-area solid black 96-well plate, add the following components and pre-incubate at room temperature for 5 minutes;
- | | |
|---------------------|--------------------------|
| Component 1. | 10 µL of 4X Active Cas13 |
| Component 2. | 10 µL of 4X guide RNA |

Note: A blank control can be set up as outlined in step 4 by replacing the enzyme working solution with an equal volume of the assay buffer.

- Step 4.** To each assay well, add 20 µL of the 2X activator/reporter mix. Shake the plate for 1 minute on a tabletop orbital shaker. Seal the assay wells with a plate sealer and incubate at 37°C for 15-30 minutes.
- Step 5.** Equilibrate the plate to ambient temperature and then remove the plate sealer. Read fluorescence on a microplate reader.

To place your order, please contact us by phone 1-(604)-232-4600, fax 1-604-232-4601 or by email: orders@signalchem.com or IVD@signalchem.com - www.signalchem.com

FOR IN VITRO RESEARCH PURPOSES ONLY. NOT INTENDED FOR USE IN HUMAN OR ANIMALS.

SAFETY DATA SHEET

Article 1 - Product Identification

Product Name: LwCas13a, Active**Catalog # CS13A-E321H**

This product is sold only for research use by qualified laboratory personnel, and is not to be used as a drug, medical device, food additive, cosmetic, nor household chemical. It is not to be used in diagnostic, therapeutic, consumer, agricultural, nor pesticidal applications.

Manufacturer's Name: SignalChem Biotech Inc.
Street Address: 110-13120 Vanier Place
City, Prov. Postal Code: Richmond, BC, V6V 2J2
Fax: 604-232-4601
EMERGENCY PHONE: 604-232-4600

Article 2 - Hazard Identification

- **WHMIS Classification:** Not WHMIS controlled.
- **GHS classification:** None.
- **Hazard Pictograms:** None.
- **Signal words:** None.
- **Hazard statements:** None.
- **Precautionary statements:** None.
- **Other hazards:** None known.

Article 3 – Composition/Information on Ingredients

Chemical Characterization: Mixture.

Description: This product consists of the substances listed below.

Common name	Chemical name	CAS-No.	Concentration
Glycerol	Glycerol	56-81-5	10%
NaCl	Sodium chloride	7647-14-5	1.75%
Imidazole	1,3-Diaza-2,4-cyclopentadiene	288-32-4	≤1.02%
Sodium Phosphate, Dibasic	Sodium Phosphate, Dibasic	7782-85-6	1.34%
DTT; Dithiothreitol	(R*,R*)-1,4-Dimercaptobutane-2,3-diol	3483-12-3	0.0154%
Protein	N/A	N/A	≤0.01%

Article 4 – First-aid Measures

- **General information:** Consult a physician by providing the SDS.
- **After inhalation:** Breath in fresh air. If cannot breathe, give artificial respiration and consult a physician.
- **After skin contact:** Immediately wash with soap and plenty of water and rinse thoroughly. Consult a physician.
- **After eye contact:** Rinse opened eyes with plenty of water for at least 15 minutes. Remove contact lenses, if present and easy to do so. Consult a physician.
- **After swallowing:** Not expected to present a significant ingestion hazard under anticipated conditions of normal use. If you feel unwell, seek medical advice.

Article 5 - Fire-fighting Measures

- **Suitable extinguishing media:** Use water spray, extinguishing powder, carbon dioxide, or other appropriate measure that is suitable to the environment.
- **Specific hazards arising from the substance or mixture:** None known.
- **Special protective equipment and precautions for fire-fighters:** Self-contained breathing apparatus if necessary.

To place your order, please contact us by phone 1-(604)-232-4600, fax 1-604-232-4601
or by email: orders@signalchem.com or IVD@signalchem.com - www.signalchem.com

FOR IN VITRO RESEARCH PURPOSES ONLY. NOT INTENDED FOR USE IN HUMAN OR ANIMALS.

SAFETY DATA SHEET

Article 6 – Accidental Release Measures

- **Personal precautions, protective equipment and emergency procedures:** Apply standard laboratory practices and personal protective equipment. Avoid breathing vapors, mist, or gas. Ensure adequate ventilation.
- **Environmental precautions:** Do not allow to enter drains.
- **Methods and materials for containment and cleaning up:** Absorb on sand or vermiculite and place in closed containers for disposal.

Article 7 - Handling and Storage

- **Precautions for safe handling:** Wear chemical safety goggles and compatible chemical-resistant gloves. Avoid inhalation, contact with eyes, skin or clothing.
- **Conditions for safe storage:** Store in a dry and well-ventilated place in -70 °C. Keep container upright and tightly closed.

Article 8 - Exposure Controls/Personal Protection

- **Components with limit monitoring values at workplace:**
NA
- **Appropriate engineering controls:**
Apply adequate ventilation including mechanical exhaust or laboratory fume hood. Follow standard laboratory practices.
- **Individual protection measures:**
Respiratory protection:
Use appropriate respirator if there is inadequate ventilation by following the government standards.
Hand protection:
Wear gloves and use proper glove removal technique to avoid skin contact. Discard gloves after use by following the applicable laboratory regulations. Wash and dry hands.
Eye/face protection:
Safety goggles with side-shields approved under appropriate government standards.
Skin/body protection:
Use appropriate clothing, footwear and any additional protection measures to protect from splashing or contamination.

Article 9 – Physical and Chemical Properties

Appearance: Colorless fluid.	Danger of explosion: Product does not present an explosion hazard.
Odour/Odour Threshold: Not determined.	Explosion limits: Not available.
pH: Not available.	Decomposition temperature: Not available.
Melting point/freezing point: Not determined.	Vapor pressure at 20 °C: Not available.
Boiling point/Boiling range: >100 °C.	Density: Not determined.
Flash point: > 100 °C.	Relative density: Not determined.
Flammability (solid, gaseous): Not determined.	Vapor density: Not determined.
Ignition temperature: Not determined.	Evaporation rate: Not determined.
Auto-igniting: Product is not self-igniting.	Solubility in / Miscibility with Water: Fully miscible.

Article 10 - Stability and Reactivity

- **Reactivity:** Stable under recommended transport and storage conditions.
- **Chemical stability:** Stable under recommended transport and storage conditions.
- **Possible hazardous reactions:** No dangerous reactions known.
- **Conditions to avoid:** Heat and moisture.
- **Incompatible materials:** Not determined.
- **Hazardous decomposition products:** Not determined.

To place your order, please contact us by phone 1-(604)-232-4600, fax 1-604-232-4601 or by email: orders@signalchem.com or IVD@signalchem.com - www.signalchem.com

FOR IN VITRO RESEARCH PURPOSES ONLY. NOT INTENDED FOR USE IN HUMAN OR ANIMALS.

SAFETY DATA SHEET

Article 11 - Toxicological Information

- **Acute toxicity:** Not available.
- **LD/LC50:** Not available.
- **Skin corrosion/irritation:** Not available.
- **Serious eye damage/eye irritation:** Not available.
- **Respiratory or skin sensitization:** Not available.
- **Germ cell mutagenicity:** Not available.
- **Carcinogenicity:** No components are listed in IARC, or NTP, or OSHA, or ACGIH.
- **Reproductive toxicity:** Not available.
- **Teratogenicity:** Not available.
- **Specific target organ toxicity - single exposure/ - repeated exposure (GHS):** Not available.
- **Aspiration hazard:** Not available.
- **Potential health effects:**
 - Inhalation: No data available
 - Ingestion: No data available
 - Skin: No data available
 - Eyes: No data available
- **Signs and Symptoms of Exposure:** No data available
- **Synergistic effects:** Not available.

Article 12 - Ecological Information

- **Eco-toxicity:** No data available.
- **Biodegradability:** Not applicable.
- **Bio-accumulative potential:** Not applicable.
- **Mobility in soil:** Not applicable.
- **PBT and vPvB assessment:** Not applicable.
- **Other adverse effects:** Not applicable.

Article 13 - Disposal Considerations

- **Disposal methods:** In accordance to applicable national, regional, or local laws and regulations. For additional handling information and protection of employees please refer to Article 7 and 8.
- **Contaminated packaging:** Disposal should be made in accordance to official regulations. Use water or cleansing agents to clean the area.

Article 14 - Transport Information

- **DOT:** Not dangerous goods.
- **IMDG:** Not dangerous goods.
- **IATA:** Not dangerous goods.

Article 15 - Regulatory Information

- **WHMIS Classification:** Non-hazardous.
- **GHS label elements:** Not applicable.
- **Signal word:** Not applicable.
- **Hazard statements:** Not applicable.

Article 16 - Other Information

The above information is believed to be correct but does not purport to be all-inclusive and shall be used only as a guide. SignalChem shall not be held liable for any damage resulting from handling or from contact with the above product. See the Technical Specification, Packing Slip, Invoice, and Product Catalog for additional terms and conditions of sale.

To place your order, please contact us by phone 1-(604)-232-4600, fax 1-604-232-4601
or by email: orders@signalchem.com or IVD@signalchem.com - www.signalchem.com

FOR IN VITRO RESEARCH PURPOSES ONLY. NOT INTENDED FOR USE IN HUMAN OR ANIMALS.